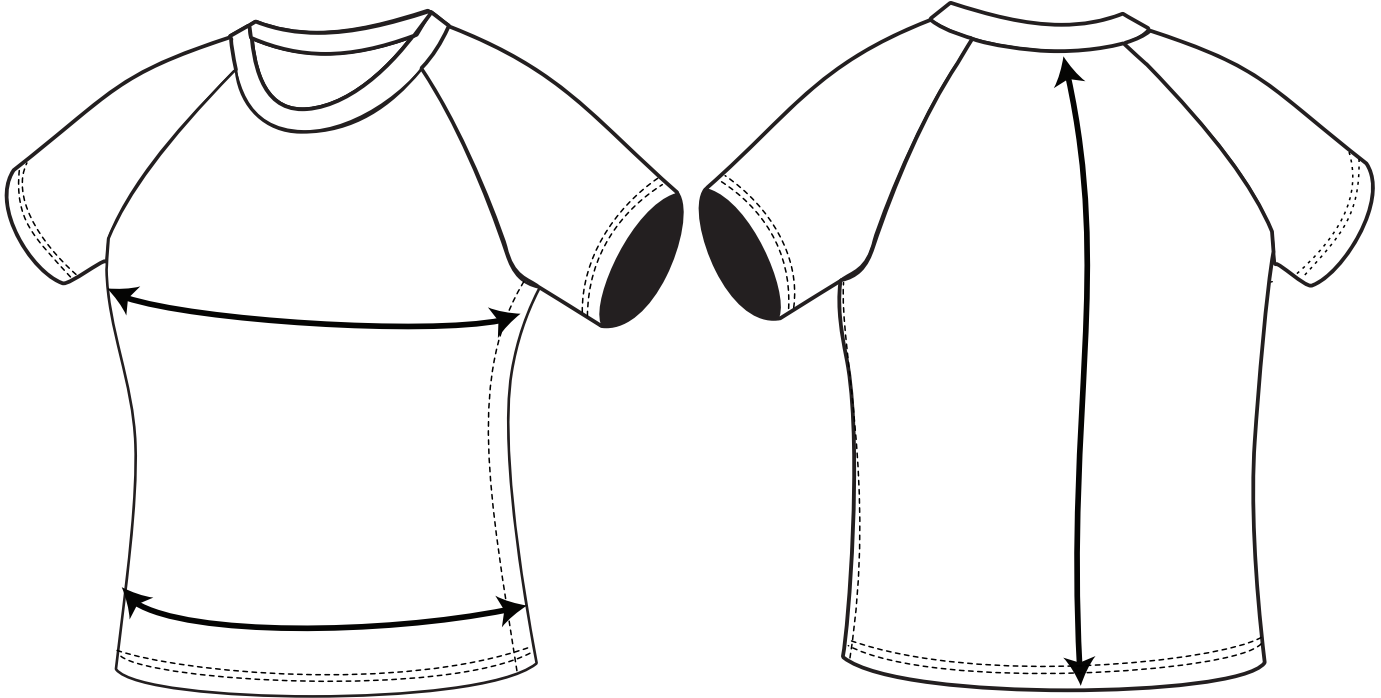


Adult Rash Shirt Size Chart

Wear it!

It's all about image

021RS Unisex Rashie



This raglan sleeved rash shirt has a tapered fit is made from a 78% recycled polyester which is chlorine and sunscreen resistant. It also boasts a 50% UPF sun resistant structure.

We recommend you measure an existing similar garment you feel comfortable wearing. Lay it out flat on a table and measure to compare the size for fit.

Quantity	XS	S	M	L	XL	2XL	3XL
1/2 Chest	40	45	50	55	60	65	70
Waist	35	40	45	50	55	60	66
Cntr\Back	60	62	64	66	68	70	72

This sizing chart should be used as a guide only
All measurements are in centimeters

